

Empower Your Innovation:

Seamless Cloud and On-Prem Solutions
with Lyrid.io



Lyrid.io is a next-generation cloud-native platform designed to enhance operational efficiency and drive business growth. Engineered for both technical professionals and business executives, Lyrid.io provides a robust, scalable, and secure environment to develop, deploy, and manage applications seamlessly. Lyrid.io offers the flexibility to run on both cloud and on-premise infrastructures, catering to diverse business needs.

KEY FEATURES



Automated
Deployments



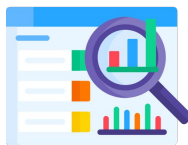
Scalability



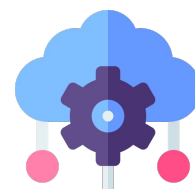
Security



Cost Efficiency



Real-Time Analytics
and Alert



Cloud and
On-Premise
Compatibility



KEY FEATURES

AUTOMATED DEPLOYMENT

Lyrid.io simplifies the deployment process with automated workflows, reducing the time and effort required to release new features and updates.

- Faster time-to-market
- Reduced human error
- Enhanced productivity

SCALABILITY

Built to handle workloads of any size, Lyrid.io ensures your applications can scale effortlessly to meet growing demands.

- Seamless scalability
- Cost-effective resource management
- Improved performance under varying loads

SECURITY

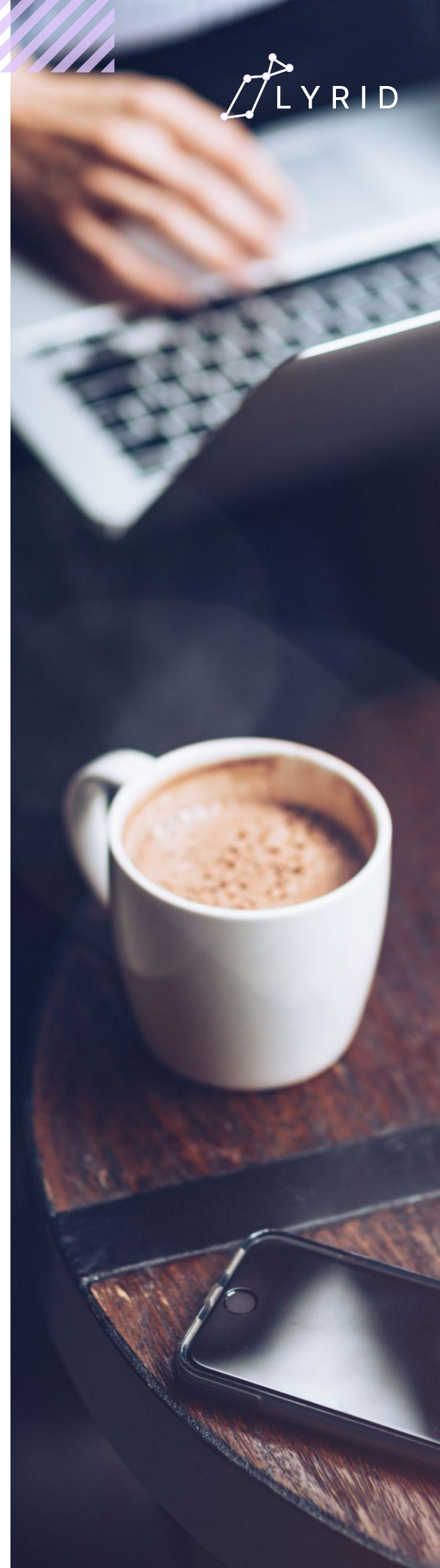
Lyrid.io prioritizes the security of your data and applications with pre-installed security features.

- Pre-Configured TLS Certificate
- Isolated Internal Network
- Role-Based Access Control

REAL-TIME ANALYTICS & ALERT

Gain valuable insights into your operations with Lyrid.io's powerful analytics and monitoring tools.

- Data-driven decision making
- Proactive issue resolution
- Enhanced system visibility





KEY FEATURES

COST EFFICIENCY

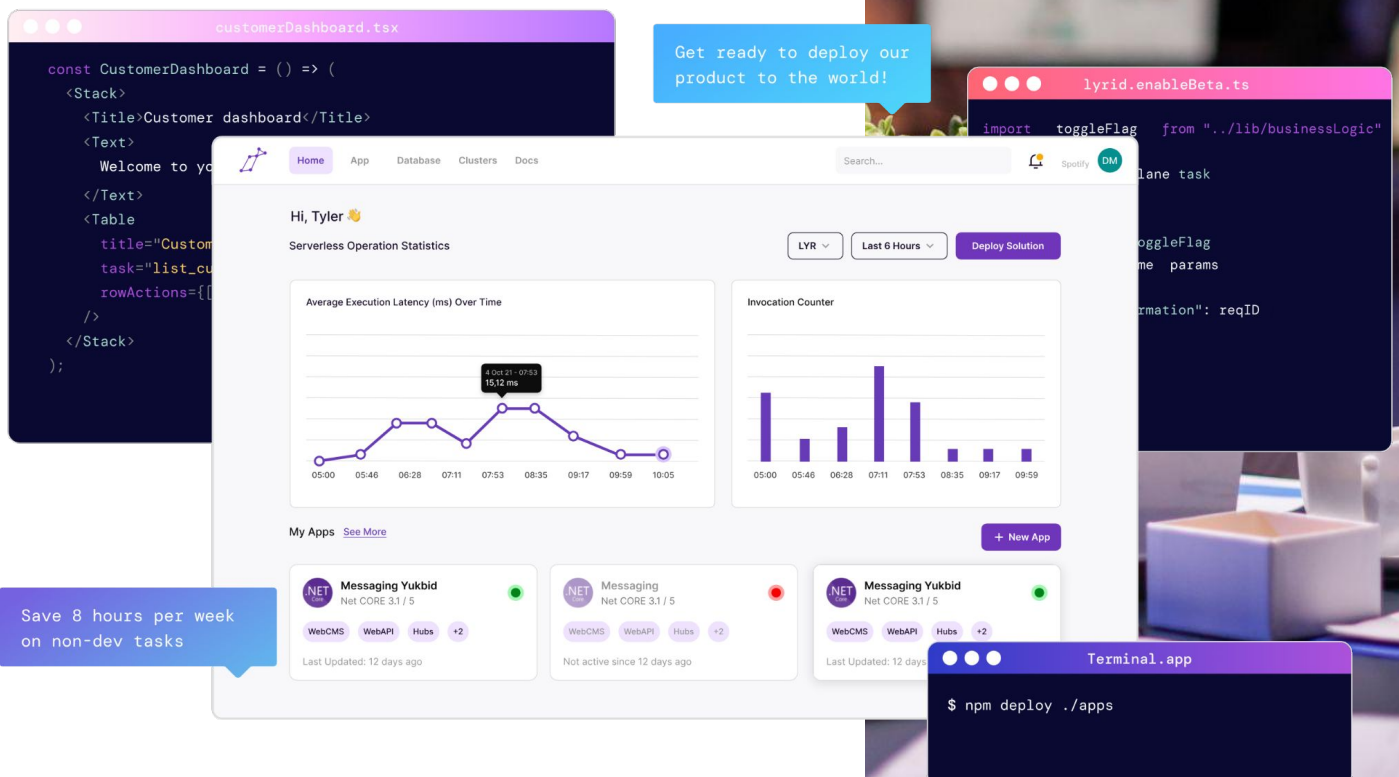
Lyrid.io ensures that your budget is aligned with your actual usage, reducing unnecessary expenses and maximizing return on investment.

- Cost-effective resource allocation
- Increased ROI
- Budget predictability

CLOUD AND ON-PREMISE CAPABILITY

Lyrid.io provides the flexibility to run applications both in the cloud and on-premise.

- Deployment flexibility
- Enhanced control over data
- Tailored infrastructure solutions



customerDashboard.tsx

```
const CustomerDashboard = () => (
  <Stack>
    <Title>Customer dashboard</Title>
    <Text>
      Welcome to yo
    </Text>
    <Table>
      title="Custom
      task="list_cu
      rowActions={{
    </Table>
  </Stack>
);
```

Get ready to deploy our product to the world!

lyrid.enableBeta.ts

```
import toggleFlag from "../lib/businessLogic"
lane task
toggleFlag
me params
rmation": reqID
```

Hi, Tyler 🙌

Serverless Operation Statistics

Average Execution Latency (ms) Over Time

Invocation Counter

My Apps [See More](#) [+ New App](#)

NET Messaging Yukbid Net CORE 3.1 / 5

WebCMS WebAPI Hubs +2

Last Updated: 12 days ago

NET Messaging Net CORE 3.1 / 5

WebCMS WebAPI Hubs +2

Not active since 12 days ago

NET Messaging Yukbid Net CORE 3.1 / 5

WebCMS WebAPI Hubs +2

Last Updated: 12 days ago

Terminal.app

```
$ npm deploy ./apps
```

Save 8 hours per week on non-dev tasks

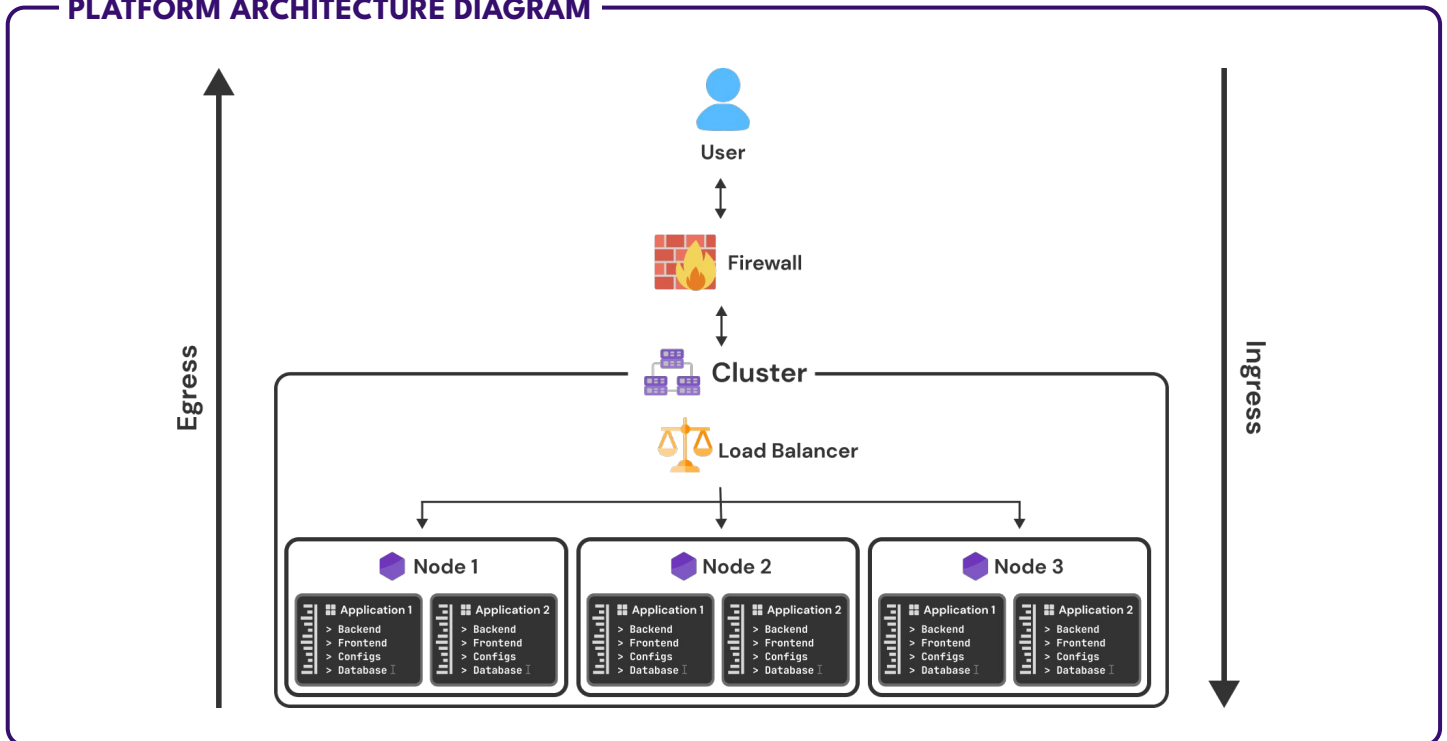


TECHNICAL SPECIFICATIONS

ARCHITECTURE

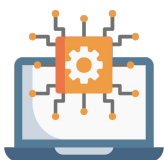
Lyrid.io is designed with a microservices architecture, providing flexibility, scalability, and resilience. The platform leverages containerization to ensure consistent environments from development to production.

PLATFORM ARCHITECTURE DIAGRAM



- **Firewall:** Ensures that internal services remain isolated, with only publicly accessible applications being routed to the Internet.
- **Cluster:** Each cluster contains a minimum of three nodes to ensure high availability.
- **Load Balancer:** Distributes incoming traffic based on current resource availability to ensure optimal performance and reliability.
- **Nodes:** Machines designated to run the application, supplying the essential computational resources and operational environment.
- **Application/Microservices:** Specialized functions that collectively ensure the application's overall functionality, performance, and scalability.

SYSTEM REQUIREMENTS



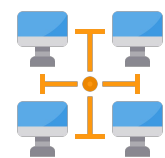
Operating Systems



Hardware



Storage



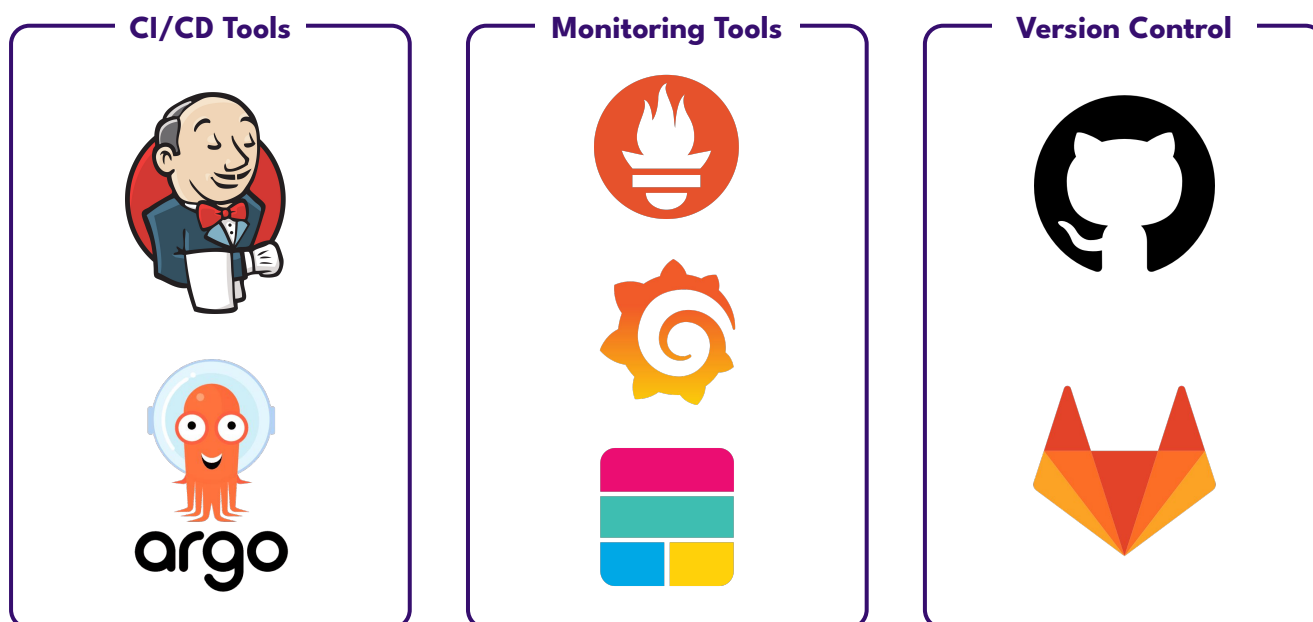
Network



TECHNICAL SPECIFICATIONS

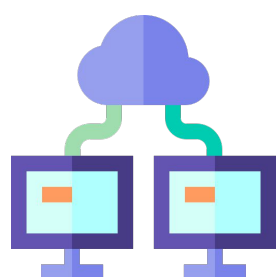
INTEGRATION OPTIONS

Lyrid.io supports a wide range of integrations to ensure compatibility with various tools and services. Key integrations include:



DEPLOYMENT OPTIONS

Lyrid.io offers flexible deployment options to meet diverse business needs:



Public Cloud

Deploy on any public cloud



Private Cloud

Use private cloud infrastructure for enhanced security and control.



On-Premise

Deploy within your own data centers to meet regulatory and compliance requirements.




TECHNICAL SPECIFICATIONS

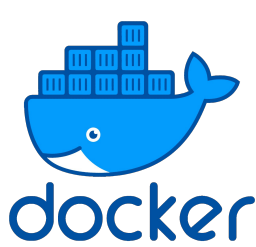
SUPPORTED LANGUAGES AND CONTAINER

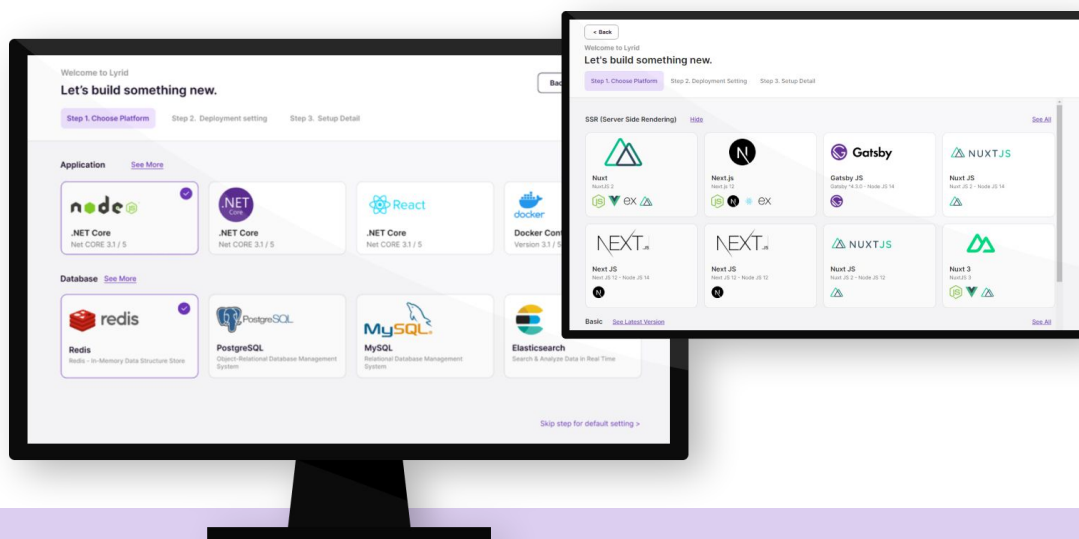
Lyrid.io supports multiple programming languages and frameworks to cater to a wide range of development needs:

SERVERLESS



CONTAINER





PERFORMANCE METRICS

Lyrid.io is engineered to deliver high performance and reliability. Key performance metrics include:

PLATFORM UPTIME

99.99%

HARDWARE COMPATIBILITY

92.5%*

*we accommodate custom integrations for rarely used hypervisors

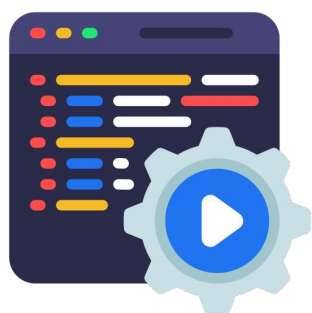
- **Scalability:** Supports both horizontal and vertical scaling to handle increased loads without degradation in performance
- We natively support public cloud, baremetal, and most used hypervisors.



PROFESSIONAL SERVICES

MONOLITHIC TO MICROSERVICES

Transitioning from a monolithic architecture to microservices involves decomposing a large, monolithic application into smaller, loosely coupled, and independently deployable services. This process enhances flexibility and scalability, allowing organizations to develop, test, and deploy features more rapidly.



BENEFITS

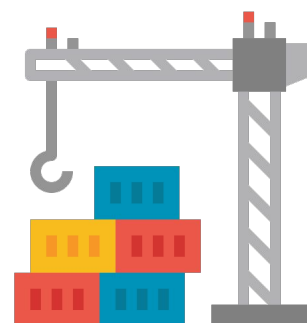
- **Improved Scalability:** Scale individual services independently to meet demand, ensuring optimal resource utilization.
- **Enhanced Agility:** Accelerate development cycles and reduce time-to-market for new features and updates.
- **Resilience and Fault Isolation:** Minimize the impact of failures by isolating faults within individual services, improving overall system reliability.
- **Technology Diversity:** Use the best-suited technology for each service, allowing for greater innovation and efficiency.

CONTAINERIZATION

Containerization packages software and its dependencies into a standardized unit, enabling consistent and reliable deployment across various environments. By using containers, organizations can ensure that applications run smoothly regardless of where they are deployed.

BENEFITS

- **Portability:** Run applications consistently across development, testing, and production environments.
- **Efficiency:** Optimize resource usage by running multiple containers on a single host without the overhead of traditional virtual machines.
- **Faster Deployment:** Streamline the deployment process, allowing for quick and easy updates and rollbacks.
- **Isolation:** Enhance security and stability by isolating applications within their containers, preventing conflicts and resource contention.





PROFESSIONAL SERVICES

KUBERNETES OPTIMIZATION

Kubernetes is an open-source platform for automating the deployment, scaling, and management of containerized applications. Our Kubernetes optimization services ensure that your Kubernetes clusters are configured and managed for maximum efficiency and performance.

BENEFITS

- **Automated Scaling:** Dynamically adjust resources to match application demand, ensuring optimal performance without manual intervention.
- **Resource Optimization:** Efficiently allocate resources within your clusters to maximize utilization and reduce costs.
- **Improved Reliability:** Implement best practices for high availability and fault tolerance, minimizing downtime and ensuring continuous operation.
- **Enhanced Security:** Apply robust security measures and policies to protect your applications and data within Kubernetes environments.

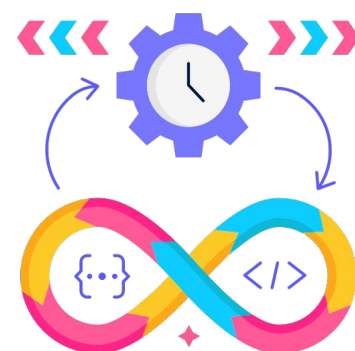


CI/CD IMPLEMENTATION

Continuous Integration and Continuous Deployment (CI/CD) are practices that automate the integration and delivery of code changes, enabling faster and more reliable software development. Our CI/CD services help you set up and optimize your CI/CD pipelines to streamline your development workflows.

BENEFITS

- **Speed:** Accelerate the development process by automating testing and deployment, reducing manual intervention and potential errors.
- **Consistency:** Ensure consistent and repeatable builds and deployments, improving software quality and reliability.
- **Early Detection:** Identify and resolve issues early in the development cycle, reducing the cost and impact of defects.
- **Flexibility:** Customize CI/CD pipelines to fit your specific requirements and integrate with your existing tools and processes.





USE CASES

INDUSTRY SPECIFIC APPLICATIONS

FINANCIAL SERVICES

Lyrid.io enhances the operational efficiency of financial institutions by providing a secure, scalable platform for handling large volumes of transactions and sensitive data.

- **Scenario:** A bank needs to process millions of transactions per day while ensuring data security and regulatory compliance.
- **Solution:** Lyrid.io's robust security features and scalable infrastructure allow the bank to handle high transaction volumes with minimal latency and maximum security.
- **Benefits:** Improved transaction processing speed by 30%, enhanced data security, and compliance with financial regulations.



HEALTHCARE (HEALTH TECH)

Lyrid.io enables healthcare providers to securely manage patient data, streamline operations, and comply with stringent regulatory requirements.

- **Scenario:** A healthcare provider requires a platform to manage patient records, schedule appointments, and ensure data privacy.
- **Solution:** Lyrid.io's integrated capabilities support secure data storage, real-time analytics, and seamless integration with existing healthcare systems.
- **Benefits:** Enhanced data security and compliance, reduced administrative workload, and improved patient care coordination.



RETAIL

Lyrid.io helps retail businesses optimize their online presence, improve customer experience, and drive sales through powerful analytics and integration capabilities.

- **Scenario:** An e-commerce company aims to increase sales by enhancing its online platform's performance and customer experience.
- **Solution:** Lyrid.io's real-time analytics and scalable infrastructure enable the company to monitor user behavior, optimize website performance, and personalize customer interactions.
- **Benefits:** Increased online sales by 20%, improved website performance, and enhanced customer satisfaction.





CUSTOMER SUPPORT & SERVICES

SUPPORT OPTIONS

Lyrid.io is committed to providing exceptional customer support to ensure the success of your projects and the smooth operation of your applications. We offer a variety of support options to meet your needs:



24/7 CUSTOMER SUPPORT

Our dedicated support team is available around the clock to assist with any issues or inquiries. Whether you encounter a technical problem or need guidance on using our platform, we're here to help.



WHATSAPP



EMAIL



LIVE CHAT SUPPORT



COMMUNITY SUPPORT

Join our community forums to connect with other Lyrid.io users, share experiences, and find solutions to common challenges. Our community is an invaluable resource for learning and support.



PROFESSIONAL SERVICES

Our professional services team is available to provide expert guidance and custom solutions to meet your unique needs:

CONSULTING SERVICE: Work with our consultants to optimize your use of Lyrid.io and achieve your business goals.

CUSTOM DEVELOPMENT: Our developers can build custom solutions tailored to your specific requirements.

MANAGED SERVICES: Let us manage your Lyrid.io environment, so you can focus on your core business.



hello@lyrid.io



lyrid.io



@lyridinc



@lyridinc



99 South Almaden Blvd. Suite 600
San Jose, CA 95113



Jl. Pluit Indah 168B-G, Pluit Penjaringan,
Jakarta Utara, DKI Jakarta 14450