

# SHARP®

VERSATILE FEATURES IN A COMPACT DESKTOP DESIGN



MX-B201D



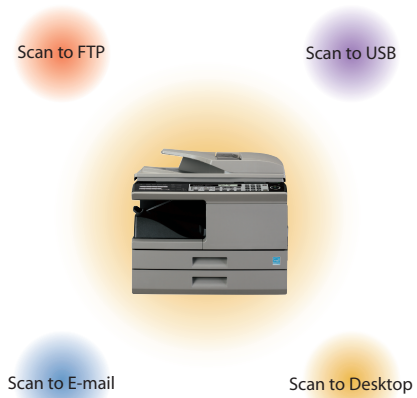
The Sharp MX-B201D Digital Multifunction Document System is big on performance, but compact in size. Designed for small offices and workgroups, the MX-B201D delivers all the required features for fast-paced, small office environments. With 20 page-per-minute copying/printing and integrated color PC scanning, your office workflow won't miss a beat. A 50-sheet document feeder provides standard 2-sided scanning for extra efficiency, as well as duplex printing and copying. The cost-effective, consumable system utilizes a three-component system that's easy to replace and easy on your wallet. And since business never stands still, the MX-B201D offers flexible options to add Super G3 faxing, networking and web-based management...so you'll be ready for anything.

#### HIGH-PRODUCTIVITY FEATURES

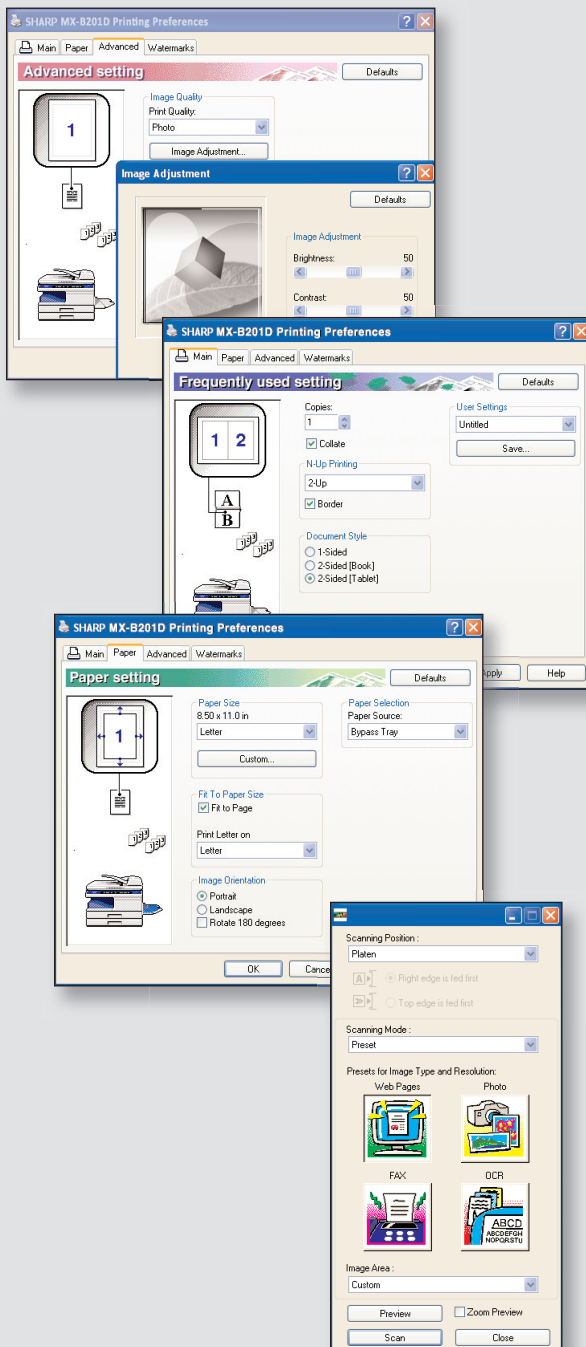
- 20-ppm compact desktop printer/copier with high-quality 600 dpi output
- Electronic sorting and offset output stacking allows copying of multiple sets quickly and efficiently
- 50-sheet Reversing Single Pass Feeder with standard 2-sided PC scanning
- Flexible paper handling includes a 250-sheet paper supply, upgradeable to 500 sheets
- 50-sheet multi-purpose bypass tray handles different size paper ranging from 8 1/2" x 5 1/2" up to 8 1/2" x 14" as well as envelopes, labels, and transparencies
- Scan and send documents to a variety of destinations for easy distribution
- Optional Network Expansion Kit with 10/100 base TX Ethernet, Network PCL® 6 Printing and Network Scanning
- Optional PostScript® 3™ compatible Expansion Kit
- Optional Super G3 Fax Kit with 100 auto-dial destinations
- 25% to 400% zoom magnification with eight preset modes for easy image-to-paper sizing

#### BUILT-IN COLOR SCANNING WITH SHARPEDESK®

Streamline your workflow and increase productivity by converting both color and black and white documents into digital files that can be printed, stored or e-mailed. Scanning is quick and easy with Button Manager software, a built-in utility that automatically scans your files to Sharpdesk®, E-mail, Fax, OCR, Microsoft Word® or other designated application. Easily edit, store and share scanned files with Sharpdesk Document Management software, now with Windows® 7 support. And for even more functionality, simply add the optional Network Expansion Kit to distribute files with convenient network scanning. Share documents with Scan to FTP, Scan to E-mail, Scan to Desktop and Scan to USB.



# STREAMLINE DOCUMENT WORKFLOW AND ENHANCE PRODUCTIVITY WITH ADVANCED FEATURES



## HIGH-QUALITY PRINTING

The Sharp MX-B201D offers impressive 600-dpi resolution for crisp, razor-sharp text. Standard USB printing with JBIG compression and a high-performance print controller automatically compresses files so even large jobs print quickly and efficiently. With built-in electronic sorting, offset stacking and auto duplexing, it's easy to produce multiple-page documents in a snap. Robust paper handling abilities include a 50-sheet Reversing Single Pass Feeder, standard 250-sheet paper supply and an optional 250-sheet paper cassette. Add even more versatility with the optional Network Expansion Kit. With PCL6 emulation and optional Postscript 3, the MX-B201D can support cross-platform workgroups with ease.

## EASY-TO-USE SHARP UTILITIES

Sharp's user friendly, integrated software makes managing your MX-B201D Document System effortless. With Sharp Remote Device Management (SRDM), IT professionals can remotely manage any SNMP compliant printer on your network. Designed for desktop users, Printer Status Monitor allows users to view printer conditions, check paper status and more...all through an easy-to-use interface.

## 24/7 TRAINING WITH MY SHARP™

Managing all of the advanced features of your Sharp product is simple and easy with My Sharp. This dedicated customer training website is customized to your MX-B201D and allows you to locate resources and find information specific to your configuration, truly helping you maximize your investment.

## CONVENIENT, WEB-BASED MANAGEMENT

Sharp's online management tools offer both users and administrators time-saving features, including scan destination management, Remote E-mail Diagnostics, device configuration, and more. A familiar, easy-to-use interface provides sophisticated controls for monitoring printer usage and managing security features\*.



\* Some feature may require optional equipment and/or software.

# MX-B201D SPECIFICATIONS

## COPIER SPECIFICATIONS

Type	Desktop multi-function digital document system
Functions	Copy, print, network print, PC Scan, network scan, fax <sup>1</sup>
Copy System	Dry electrostatic transfer system
Originals	Sheets, bound documents
Original Size (Max)	8 1/2" x 14"
Copy Size	Min. 5 1/2" x 8 1/2", Max. 8 1/2" x 14"
Copy Speed	20 ppm (Letter)
Continuous Copy	Max. 99 copies
First Copy Out Time	8.0 sec. (when CHECK RSPF OPEN is set to OFF), 10.7 sec. (when CHECK RSPF OPEN is set to ON)
Warm Up Time	0 sec. <sup>2</sup> (when Energy Saver mode is not enabled)
Zoom Range	25% to 400% in 1% increments (with RSPF 50%-200%)
Fixed Zoom Mode	25%, 50%, 64%, 78%, 100%, 129%, 200%, 400%
Exposure System	Fixed optical source, slit exposure (stationary platen)
Paper Feed System	Standard: 250-sheet paper cassette with automatic feed and 50-sheet manual bypass tray Optional: 250-sheet paper feed unit
Original Feed System	50-sheet reversing single pass feeder (RSPF)/document glass
RSPF Feeding	Approx. 13 originals per minute (letter/100%/simplex), original weight 15 to 24 lb. Bond
Paper Type	Paper Cassettes: 15-21 lb. standard or recycled bond paper Bypass Tray: up to 50 sheets 15-34 lb. standard or recycled bond paper; postcards/envelopes (#10 Monarch)/OHP film/labels one sheet feed
Memory	64 MB (shared)
Copy Resolution	Scan: 600 dpi, output: 600 dpi
Exposure Modes	Photo mode: 600 x 600 dpi Auto exposure: 600 x 300 dpi (manual 5 steps)
Gray Scale	256 gradations/2 levels
Copy Features	ID card copy, electronic sorting, 2-in-1 copy, offset stacking, auto tray switching, margin shift, zoom, variable memory adjustment, auto shut off, and duplex copy/print
Output Tray Capacity	200 sheets (face down)
Offset Stacking	Standard paper shifter (offset stacks sets by 1 inch in output tray)
Fusing System	Heat roller
Developer System	Magnetic brush development
Light Source	Tri-color CCD light source (RGB)
Power Requirement	AC 100-127 V, 50/60 HZ, 8 Amps
Power Consumption	Max 1000W
Operating Conditions	Temperature: 50 degrees to 86 degrees F, Humidity: 20% to 85%
Weight	41.7 lbs.
Dimensions	20-3/8" x 18-1/8" x 14-3/4"

## JBIG SPEED-ENHANCED PRINTER FUNCTION (STANDARD)

Emulation	Sharp SPLC host-based controller with JBIG compression
Print Speed	20 pages per minute (letter) with ROPM
First Print Time	8 seconds (without data transfer time; ready)
Resolution	600 dpi
Operating System	Windows® 2000, XP, Vista®, 7, XP x64, Vista® x64, 7 x64
Software	Print driver, Printer Status Monitor
Scan Once Print Man	Yes
Interface	Standard: USB 2.0
Memory	Shared
Features	Offset print, status monitor, 2-up/4-up printing, fit to page, watermark, duplex printing

## SCANNER FUNCTION (STANDARD)

Type	Flat head full color/monochrome PC scanning system
Resolution	Basic: 600 x 600 dpi, setting range 50 – 9600 dpi
Operating System	Windows 2000, XP, Vista, 7
Original Type	Sheets/books up to letter/legal size
Scanning Method	Platen glass or RSPF
Output	RGB 1 bit or 8 bit/pixel
Protocol	TWAIN, WIA (Windows XP, Vista, 7)
Interface	USB 2.0 (compatible with USB 1.1)
Software	Sharpdesk® document management software, Button Manager, Sharp Composer (single user)
PC Scan Destinations	6 preset PC scan destinations can be configured using Button Manager
File Formats	BMP/TIFF/PDF

<sup>1</sup> Some features may require optional equipment and/or software.

<sup>2</sup> Specification may vary depending on product configuration, machine settings and operating and/or environmental conditions.

<sup>3</sup> Based on ITU-T Test Chart # 1 standard resolution. Actual transmission time will vary according to line conditions.

## PCL®6 NETWORK PRINTING/SCANNING EXPANSION KIT (OPTIONAL)

Features	PCL®6 network printing and network scanning with web-based management function
Standard Memory	128 MB standard
Client PC	IBM PC/AT compatible (P3/500 MHz recommended), 100 MB available hard disk space, and 800 x 600 dpi screen resolution
Requirements	
Operating Systems	Windows 2000, XP, Vista, 7, Server 2003, Server 2008, XP x64, Vista x64, 7 x64, Server 2003 x64, Server 2008 x64, Mac OS® X 10.2 – 10.6
Network Protocols	TCP/IP, IPV4
Interface	RJ45 Ethernet; 10Base-T/100Base-TX
Utilities	Web-based management, NIC Manager, integrated software installer, Sharp Remote Device Manager (SRDM), Printer Status Monitor, Online manual
Print Emulation	PCL6/PS3 (option)
Print Speed	20 ppm (Letter)
Print Resolution	600 dpi
Print Features	N-up printing, fit to page, auto paper select, front cover print (with MX-PK10), watermarks, and duplex print
Scanning Resolution	Up to 600 dpi
Operating Systems for Scanning	Windows 2000, XP, Vista, 7, Server 2003, Server 2008, XP x64, Vista x64, 7 x64, Server 2003 x64, Server 2008 x64, Mac OS® X 10.2 – 10.6
Scanning Features	Scan to USB, Scan to E-mail, Scan to Desktop, Scan to FTP and Scan to URL
Scanning Formats	JPEG/TIFF/PDF
Scanning Software	Sharpdesk document management software, includes OCR and Sharp Composer (3-user license)

## SUPER G3 FAX KIT (OPTIONAL)

Modem Speed	Super G3 (up to 33.6 kbps) <sup>3</sup>
Transmission Time	3 Seconds <sup>3</sup>
Compression Type	MH, MR, MMR, JBIG
Max. Original Size	Legal
Resolution	Standard/Fine/Superfine
Memory	2 MB
Job Memory	Up to 50
Rapid Dials	18
Speed Dials	100
Group Dials/Broadcasting	18 groups/100 destinations

## OPTIONAL EQUIPMENT AND SUPPLIES

MX-CS10	250-sheet paper tray
MX-FX12	Super G3 Fax Kit (requires MX-NB11)
MX-NB11	PCL6 Network Printing/Network Scanning Expansion Kit
MX-PK10	PostScript®3 Compatible Expansion Kit (requires MX-NB11)
MX-201ABD	Copier Stand (with door)
MX-B20NT1	Toner Cartridge
MX-B20NV1	Developer
AR-152DR	OPC Drum
MX-USX1	Sharpdesk 1 License Kit
MX-USX5	Sharpdesk 5 License Kit
MX-US10	Sharpdesk 10 License Kit
MX-US50	Sharpdesk 50 License Kit
MX-USA0	Sharpdesk 100 License Kit

