

Digital Wide Format Color Printer

RICOH
imagine. change.

RICOH IP CW2200

☑ Printer



IP CW2200

3.8 ppm

Enhance your productivity with Ricoh's new wide format printer

Designed to deliver impressive results at high speed, the RICOH IP CW2200 is the latest addition to Ricoh's wide format printer range. It offers consistent quality, durability, and performance for busy project teams working with technical drawings, graphic design or other A1/A0 documents. Ricoh's innovative GELJET™ technology, with its UV and water-resistant ink, ensures that your printed documents retain their vibrant color and clarity — making the new RICOH IP CW2200 ideal for working on both indoor and outdoor projects.

- Easy-to-use wide format printer
- Fast monochrome print speeds of up to 3.8ppm for A1; up to 2.1ppm / A1 full color
- Automatic paper roll setting
- Impressive continuous printing – print documents up to 108.25ft / 33meters long
- Flat top offers convenient work surface





Fast, flexible and efficient

Produce CAD drawings, poster designs, construction plans and other large format documents at high speed and with precision accuracy. With automatic paper roll handling and maximum printable lengths of up 108.25ft / 33meters, the RICOH IP CW2200 meets all your large format printing needs.

Intuitive, productive and reliable

The RICOH IP CW2200 features Ricoh's Smart Operation Panel designed to provide simple and user-friendly operating instructions to help teams perform tasks faster and minimize downtime. It delivers superior print quality and color consistency, making it a reliable asset to your business.

Designed to suit you and your business

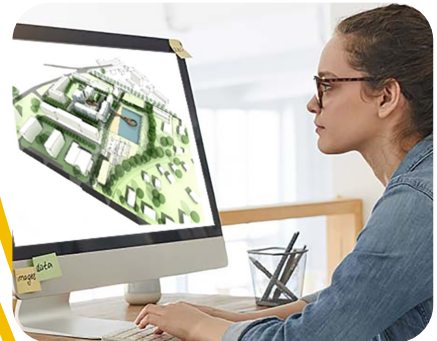
Built for productivity

With impressive print speeds, the Ricoh IP CW2200 enables your team to generate high quality, large format prints quickly — helping your teams remain productive.



Designed for efficiency

With minimal user training required, your teams have more time to focus on their jobs and spend less time at the printer.



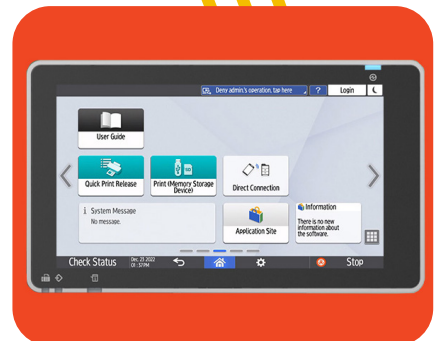
Constructed for convenience

Changing the paper roll is easy for even casual users thanks to the automatic paper roll feeding, saving time and increasing convenience.



Developed for usability

The intuitive Smart Operation Panel offers an easy to navigate user interface, which is consistent with other RICOH products, minimizing the need for training.



Give your business a competitive edge

Innovative print technology

Showcase your designs from precise line drafts to boldly colored 3D renders with the highest accuracy and finest details. Ricoh's waterproof GELJET™ technology uses inks that are smudge free and UV resistant, so your prints are high quality, durable, and can be viewed on-site in any weather.



Next-generation control panel

The color touch screen on the RICOH IP CW2200's Smart Operation Panel offers an intuitive and easy-to-use customer interface. The versatile functionality and fast, simple navigation help to reduce operation error and improve the way you interact with the device.



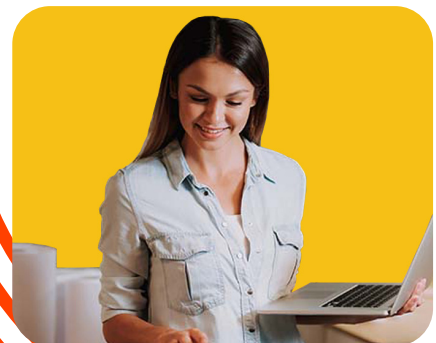
Enhanced productivity & easy operation

Production uptime is key for any business, and thanks to the automatic paper roll setting, this device requires minimal user attention. In addition, you can print documents up to 108.25ft / 33m long, maximizing productivity.



Fast print speeds

We understand that time is essential when your teams are working on large design, architectural or construction projects. The RICOH IP CW2200 delivers high performance at impressive speeds of up to 3.8 ppm at A1 size for B/W output.



Industry-leading quality and reliable service

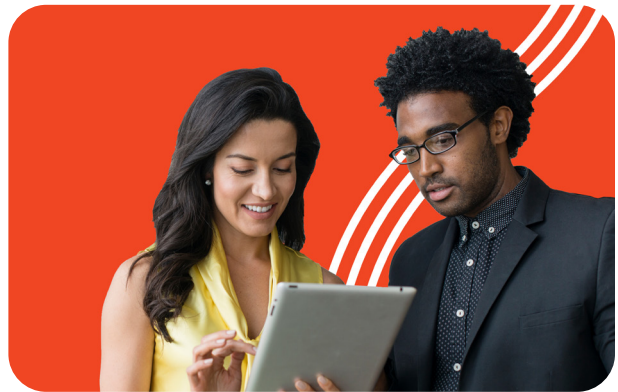
Extra peace of mind

At Ricoh, we understand how important it is to keep operations running smoothly. Our team of experts will work closely with you to quickly resolve any concerns or issues.



A consultative approach

Ricoh's experienced team will work closely with you to understand your business needs and help you select the technology solutions that best suit your business.



Putting your business safety first

Ricoh's products are designed with a variety of security measures, including administrator/user authentication, encrypted, secured print and Windows/LDAP authentication unauthorized copy prevention to keep your information safe and secured.



Minimizing environmental impact

Ricoh is committed to conserving our planet's resources and we are working consciously to minimize our environmental impact. GELJET™ technology offers lower power consumption than laser products.



The RICOH IP CW2200 wide format printer



- 1 The flat top can be used as extra workspace
- 2 Maximum print length of 108.25ft / 33m long allows for extended print runs
- 3 High print speeds of 3.8ppm for A1 mono and 2.1ppm for A1 color
- 4 Standard Smart Operation Panel is common with other Ricoh devices
- 5 Automatic paper roll setting feature eliminates the need for manual paper feeding
- 6 Unique Ricoh water-resistant GELJET™ technology

RICOH IP CW2200 Main Specifications

GENERAL

Configuration	Console
Copying/printing process	On-demand Piezo inkjet system (pigment-based ink)
Resolution	1,200 x 1,200 dpi
Memory capacity	4 GB
Hard Disk Drive	320 GB
Power source	120 – 127 V, 3.6 A (max.), 60 Hz
Dimensions (W x D x H)	54.5" x 26" x 44" / 1,384 x 660 x 1,117 mm
Weight	220 lbs. (100kg)

PRINTER

Controller board	Embedded
CPU	1.6 GHz
Print speed	A1 Long-edge Feed: B/W: 3.8 ppm, Color: 2.1 ppm A0 Short-edge Feed: B/W: 1.9 ppm, Color: 1.1 ppm
Print resolution	Speed priority (drawing): 600 x 300 dpi Speed priority: 600 x 300 dpi Standard: 600 x 600 dpi Quality priority: 600 x 600 dpi Quality priority mode for only coated paper, film (matted) and special paper: 1,200 x 1,200 dpi
Print drivers	Adobe Postscript™
Fonts	European 136 fonts (PS3)
Network interface: standard	10/100/1000 base-TX USB 2.0
Network interface: optional	Wireless LAN IEEE 802.11a/b/g/n
Network protocol: standard	TCP/IP (IPv4, IPv6)
Standard MIB	MIB-II (RFC1213) Host Resource (RFC1514) Printer MIB (RFC1759)
Private MIB	Original
Supported Environments/OS	Windows 8.1(32/64bit), Windows 10(32/64bit), Windows 11, Server2012/R2, Server2016, Server2019, Server2022 Mac® OS (10.14 or later), Other Supported Environments: Sun Solaris 10, HP-UX 11.x, 11iv2, & 11iv3, Red Hat Linux Enterprise V4, V5 & V6, SCO OpenServer 5.0.7 & 6.0. IBM AIX V6.1 & V7.1, Citrix XenApp 7.15 LTSR & VirtualApps/Desktops 2012 & later.
Media to print	Yes (JPEG/TIFF/PDF)
Printer features	Sample Print, Hold Print, Stored Print, Unauthorized Copy Prevention, One Direction, WSD Printer, Color Matching, POP, CUD, Media to Print (JPEG/TIFF/PDF), PDF Direct Print, Ink save mode (save ratio: 50%), Encrypted Secure Print, Auto Job Promotion, Bonjour Support, Media Direct Print, Barrier-free Color Management Mode, Scheduled Print, Banner Page Print, System Reset Timer, Classification Code, Emergency Print, Standard MIB, Private MIB, Black Over Print, Tray-Parameter Change from WebImageMonitor, Poster Print

PAPER HANDLING

Output paper size	Maximum Roll Feeder: 36" (914.4mm) width, 1,299" (33,000mm) length Maximum bypass: 36" (914.4mm) width, 78.7" (2,000mm) length
Output paper weight	Roll Paper: 0.068 - 0.2 mm (51 -190 g/m ²) Cut Sheet: 0.068 - 0.4 mm (51 -220 g/m ²)
Roll paper width	11" / 12" / 13.4" / 14" / 15" / 17" / 18" / 22" / 24" / 30" / 34" / 36" 297 / 364 / 420 / 440 / 490 /515 / 594 /610 / 620 / 625/ 660/ 680 /707/ 728 / 800/ 841 / 880/ 914mm
Paper feeding capacity	Width: 297 - 914 mm, 11" - 36" Maximum diameter: 176 mm, 6.92" Bypass: 1 sheet
Paper output capacity	1 sheet(s) (plain paper)

ENVIRONMENTAL FEATURES

Maximum power consumption	160 W
Power consumption	Sleep 0.64w
Environmental certifications	ENERGY STAR® Certified EPEAT® Silver rated (EPEAT Silver rating is applicable only in the USA.)

CONSUMABLES

Starter Ink (Included), Print Cartridge Black 60 ml, Print Cartridge Cyan 28 ml, Print Cartridge Magenta 56 ml, Print Cartridge Yellow 56 ml.
For Purchase, Print Cartridge Black 200 ml, Print Cartridge Cyan 100 ml, Print Cartridge Magenta 100 ml, Print Cartridge Yellow 100 ml.

OTHER OPTIONS

Roll Unit RU6570, Roll Holder Unit Type M23, IEEE 802.11a/b/g/n Interface Unit Type M19, RICOH PrintTool Ver. 2, PrintCopy Tool Option Type D 2021

Some options may not be available at the time of market release.

Specifications are subject to change without notice.

For maximum performance and yield, we recommend using genuine Ricoh parts and supplies.

Some features may require additional options and/or charges.



RICOH
imagine. change.

www.ricoh-usa.com

Ricoh USA, Inc., 300 Eagleview Blvd, Exton, PA 19341, 1-800-63-RICOH.

©2023 Ricoh USA, Inc. All rights reserved. Ricoh® and the Ricoh logo are registered trademarks of Ricoh Company, Ltd. All other trademarks are the property of their respective owners. The content of this document, and the appearance, features and specifications of Ricoh products and services are subject to change from time to time without notice. Products are shown with optional features. While care has been taken to ensure the accuracy of this information, Ricoh makes no representation or warranties about the accuracy, completeness or adequacy of the information contained herein, and shall not be liable for any errors or omissions in these materials. Actual results will vary depending upon use of the products and services, and the conditions and factors affecting performance. The only warranties for Ricoh products and services are as set forth in the express warranty statements accompanying them.

R4172