



Central Dauphin School District – February 23, 2022

## HIGH VOLUME DIGITAL /PRODUCTION EQUIPMENT QUESTIONS

### CDS - Submitted by Frank Daly

1. Question – High Volume: On the pricing sheets, it calls for 5 external Fiery's. When an environment contains multiple Fiery enabled MFPs, it is our recommendation to limit the number of Windows based standalone Fiery servers to one per print operator. Remaining MFPs should then be configured with Linux based bundled Fiery servers that can then be accessed from the Windows based consoles. Is this acceptable? **The specifications address the minimum requirements for each machine and are based on the equipment usage and existing digital print shop work flow. Proposed equipment meeting or exceeding the minimum requirements will be acceptable.**

### Doceo – Submitted by David Cook

Questions for Black and White MFPs:

1. What sized stock do the Hi-Cap Trays need to hold – Letter Sized, or Oversized (11x17, 12x18)? **High Volume digital production high cap trays need to hold 11" x 17".**
2. Do you need the capability to scan to text searchable PDF (OCR capability)? **The specifications address the minimum requirements for each machine.**

Questions for Color MFPs:

1. What sized stock do the Hi-Cap Trays need to hold – Letter Sized, or Oversized (11x17, 12x18)? **Letter size.**
2. What weight of stock do you need to duplex? **All weights included in specifications. Card stock is duplexed.**
3. Since the Fiery Controller comes with Postscript, are you also looking for Postscript capability on the Internal Controller of the MFP as well (PS was starred in the spec requirement – but did not see that referenced)? **The specifications address the minimum requirements for each machine. \*\*The color MFP is required to have the ability to scan documents directly to Cloud Storage systems including email, Dropbox, Office365, Google Drive, Canvas, and Blackboard without requiring any software or network resources.**

### Fraser Advanced Information Systems – Submitted by Amanda Martin-Smeltz

1. For production devices, Scan in Color to File, Scan to E-mail, Cloud...can you please explain what cloud-based applications you need to scan to? What applications are currently being utilized to scan to cloud? **The District uses Office 365, Blackboard, Canvas, Google Drive/Suite, and DSF.**
2. On page 19 for the "high volume digital /production equipment," One spec states 65ppm color needed but then underneath states 70ppm. Can you please confirm which should be used? **70PPM**

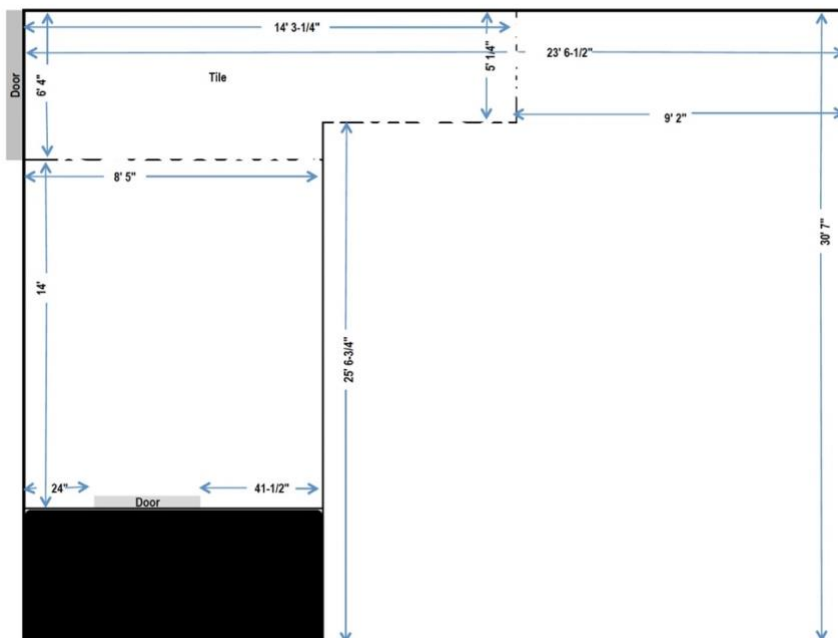
3. Different manufacturers have different specifications regarding paper capacity. Some of the specifications listed are not able to be met with current add-on accessories for specific manufacturers, if we can get in the same total paper capacity range, would that be acceptable? Speed range is also not able to be met in all cases to the exact ppm stated. If we can be in a 10ppm variance vs. the spec, would that be acceptable? **The specifications address the minimum requirements for each machine and are based on the equipment usage. Proposed equipment meeting or exceeding the minimum requirements will be acceptable.**
4. What is the implementation timeframe? **Early June 2022**
5. What timeframe is the average volume estimate based on? **Annual.**

**Konica Minolta Business – Submitted by Matt McCormick**

1. We were looking at the RFPs that were put out stating that we could use COSTARS for the contract. The verbiage of your requests conflicts with this contract since you are asking for cancellation for convenience. Will you accept their terms of cancellation of the master contract, but not any current POs? **If the terms of the COSTARS contract conflicts with the specifications as a month to month rental agreement, then COSTARS should not be used.**
2. Also, are you willing to do a lease for the 48 month term with a 1 year extension option, signing a PO for that term, or are you looking for a month to month rental contract? **A month to month rental contract as specified in the RFP.**

**Konica Minolta Business – Submitted by Debbie Meagher**

1. Page 19, Approximate Space Dimensions for B/W Units - is 14' wide and 30' long the entire available space for all 5 units or is it for each unit? **Space for all 5 black and white Production Units**
2. Page 19, Request for 65 ppm Color MFP - Area Dimensions: 39' wide x 71' long - is this for one machine or is this the entire available space for all 6 machines? **39" x 71" (inches) designated area for the copy shop color equipment.**
3. Page 19, Request for 65 ppm Color MFP - states Speed 70 PPM. Is 70 ppm the requested speed? **70PPM.**
4. Can you provide a floor plan of the Print Shop? **See below.**



5. Page 19 reference Paper Weight 16lb bond - 110lb index stock \_Do you actual mean Cover stock and not Index stock? **Cover and Index Stock are both used.**
6. Page 19 reference Print, Scan in Color to File, Scan to E-mail, Cloud, PostScript\*\*\_Which “Cloud” service are you using? **Google Drive, Canvas, Blackboard and Office 365.**
7. Page 19 reference Print, Scan in Color to File, Scan to E-mail, Cloud, PostScript\*\* \_\_Please clarify “Scan to PostScript\*\* **Clarification - Postscript printing.**
8. Page 20 reference Migration of the existing self-hosted Digit Front Site (v11.6.0.25000) to the EFI hosted Cloud. What is the date for the completion of the migration? **Time frame for migration will be in coordination with the replacement of the new high volume digital/production equipment in early June 2022.**

#### **Marco Technologies, LLC - Submitted by Philip Hawthorne**

1. Our only question/request is that the attached questionnaire be completed. EFI most likely knows most of the info. However, since Marco did not sell the solution, EFI, (now eProductivity Software (“EPS”) an affiliate of Symphony Technology Group (“STG”)), will not share that info with Marco. It has to come from the customer, this will help us to get a better cost estimate. **The EFI (eProductivity Software) contact has the specific DSF information on the questionnaire.**

#### **Ricoh Digital Services - Submitted by Charlie Barkman**

1. Who is your current vendor? **Marco Technologies , LLC.** Will there be any scheduled walk thru’s or can I schedule one? **The district is not hosting any walk throughs or pre-RFP meetings.**