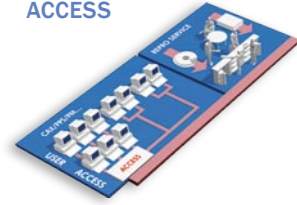


## PLOTBASE|PM

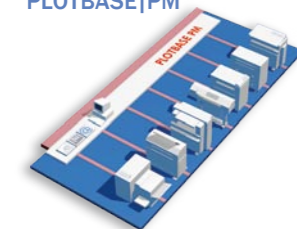
### TOTAL OUTPUT CONTROL

#### ACCESS



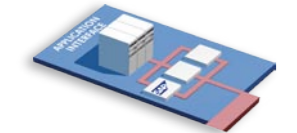
Various opportunities to communicate with PLOTBASE|PM.  
Full communication between the ACCESS-level and PLOTBASE|PM guarantees full transparency.

#### PLOTBASE|PM



Controls any kind of output. Easy management of all output devices and the entire output flow. Automatically informs the order originator, the administrator and the support on the condition of all jobs and devices.

#### PROCESS INTERFACE IN



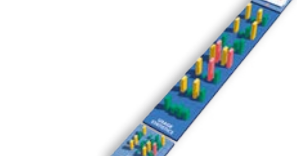
Interface on application level allows a complete integration.

#### SCANBASE/COPYBASE



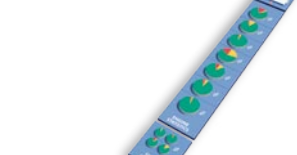
Two powerful applications to digitize paper documents.

#### USAGE STATISTICS



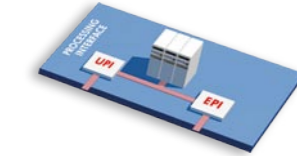
A broad range of useful reports providing all information about consumption and related costs.

#### ENGINE STATISTICS



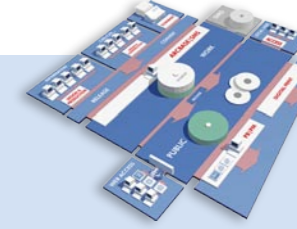
Providing necessary statistical information for economic decisions.

#### PROCESS INTERFACE OUT



The Processing Interface of PLOTBASE|PM contains all information which might be attractive or useful for other applications.

#### ARCBASE



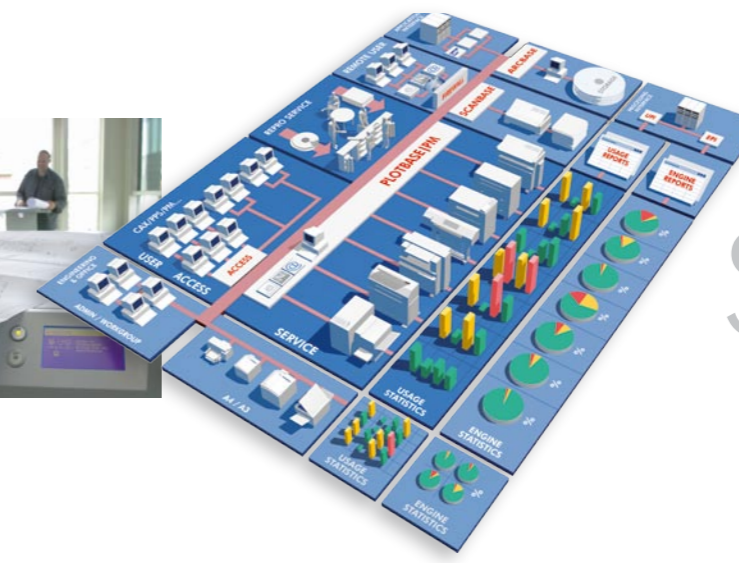
A complete STORAGE MANAGEMENT SYSTEM (SMS) to preserve documents which are released and ready to print, to copy or to distribute in a printable format.

## PLOTBASE|PM

### TOTAL OUTPUT CONTROL

## PLOTBASE|PM

### TOTAL OUTPUT CONTROL



**RATIO**<sup>®</sup>  
SOLUTIONS  
PRINT | COPY | SCAN



**RATIO**<sup>®</sup>  
SOLUTIONS  
PRINT | COPY | SCAN

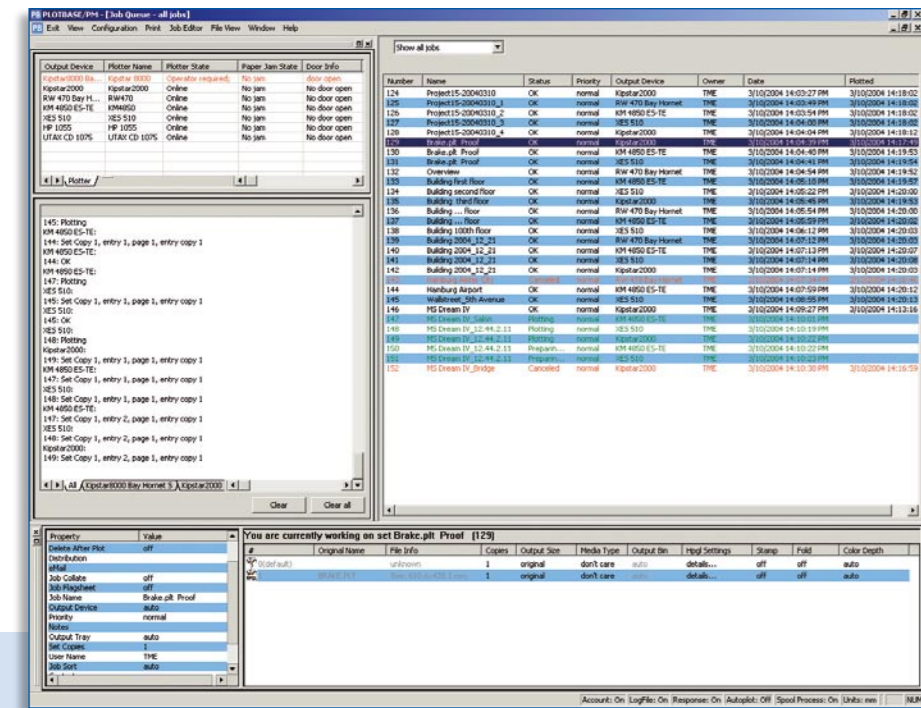
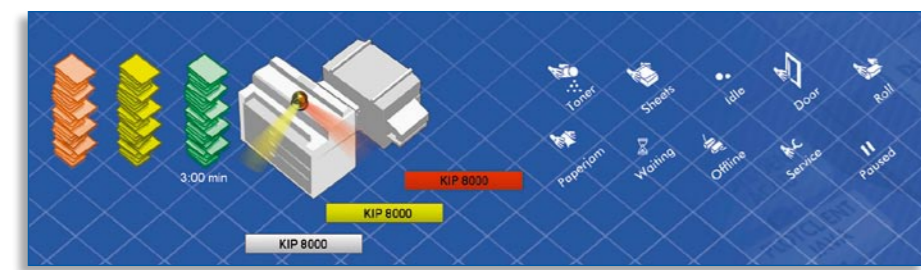
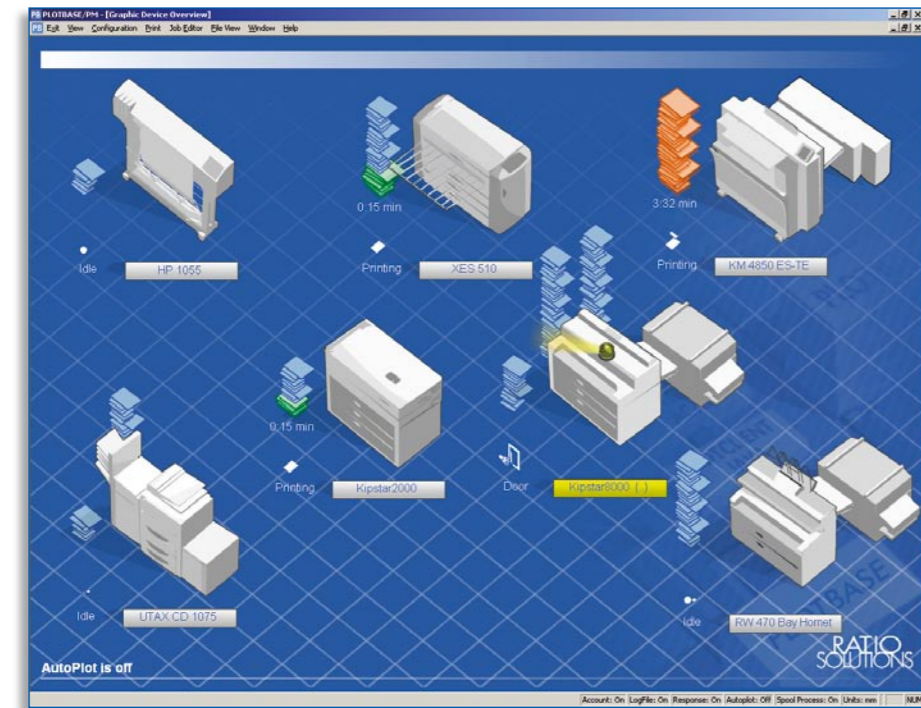


RATIO Entwicklungen GmbH | Admiralitätstrasse 59 | D-20459 Hamburg | Germany  
[www.ratiosolutions.net](http://www.ratiosolutions.net) | e-Mail [info@ratiosolutions.net](mailto:info@ratiosolutions.net)

Phone +49 (0)40 369 007-0 | Fax +49 (0)40 369 007-25

© 2004 RATIO Entwicklungen GmbH. All trademarks given in this document are registered by their respective owners.  
Changes may be made without prior notice in the interest of ongoing development and improvement.





CONTROL

WATCH

ADMINISTRATE

